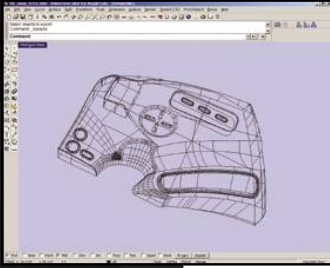


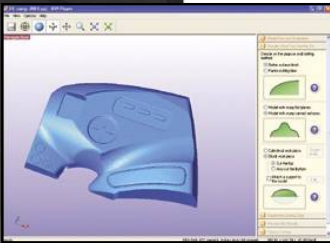
Ideal system for technical colleges

MDX-540 SRP[®] SYSTEM

Precision Prototyping Made Easy



Generate 3D models with your favorite CAD software.



New SRP Player software is a user friendly, wizard based CAM program offering uniform 3D scaling, support for 4-axis milling and simulation of finished 3D parts.



Precision X,Y,Z motion control enables you to create smooth detailed prototypes from a wide array of non-proprietary materials.



Finished prototypes offer tighter dimensional accuracies and a smooth surface finish.



Shown with available options

Anyway you look at it – the MDX-540 SRP[®] System is a winner. The MDX-540 combines precision desktop milling with powerful CAM software, making it easy to produce prototypes with industry leading speed and accuracy.

Powered by a 400W spindle, the MDX-540 mills a wide variety of nonproprietary materials and popular engineered plastics such as ABS, Delrin[®], and nylon. Compared to additive RP systems, the desktop device produces functional prototypes that perform better in structural, thermal, and electrical testing. Plus, MDX-540 prototype materials meet a host of FDA and other government regulations that additive systems cannot.

The MDX-540 can also mill non-ferrous prototypes and molds made of aluminum, brass and copper. This lets

design engineers create metal molds for rapid injection molding and EDM electrodes for production tooling.

Bundled SRP Player CAM software automates the prototyping process and generates tool paths with high speed and precision. The user-friendly, wizard-based program offers uniform 3D scaling, support for 4-axis milling, and simulation of finished 3D parts. It lets engineers quickly review the simulated prototype on the monitor and send it to the MDX-540 for production. The end result is faster prototype production, tighter dimensional accuracies and smooth layer free surfaces.



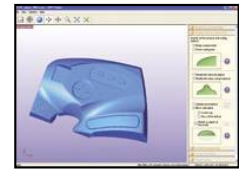
Support the 5IT vision - thinkIT, designIT, makeIT, controlIT and measure IT

MDX-540 Milling Machine Specifications

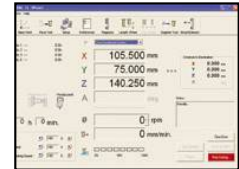
MDX-540 SRP® SYSTEM

MODEL	MDX-540	MDX-540ATC
Usable Materials	Plastics resins wood and non-ferrous metals	
XYZ-Axis Travel	500 (X) x 400 (Y) x 155 mm (Z)	400 (X) x 400 (Y) x 155mm (Z)
Milling Area with Optional Rotary Axis (ZCL-540)	180mm Diameter x 371mm Length	
Distance From Spindle Nose to Table	Maximum 254mm	
Table Size	550(W) x 420mm (D)	
Loadable workpiece weight	At acceleration of 0.2G: maximum 12kg , 0.1G:	lb (0kg , 0.05G: 20kg
XYZ-axis drive system	AC servo motor, 60W	
Operating speed	Maximum (7.5m/min)	
Acceleration	0.2G, 0.1G, 0.05G	
Software resolution	RML-1 mode: 0.01mm,	NC-code mode: 0.001mm
Mechanical resolution	0.001mm	
Positioning accuracy	+/-0.1mm/300mm , under no-load conditions	
Repeat accuracy	+/-0.05mm) under no-load conditions	
Origin reproducibility (when the power is switched on/off)	+/-0.05mm	
Spindle motor	DC brushless motor, maximum 400W	
Spindle speed	400 to 12,000 rpm; 400 to 3,000 rpm for positioning and centering	
Tool chuck	Collet method, maximum tool diameter: 10mm	Tool holder format, Taper shank: JBS4002 15T
Control command sets	RML-1 and NC codes	
Interface	USB (compliant with Universal Serial Bus Specification Revision 1.1)	
Power supply	Voltage and frequency: AC 100 to 120 V/220 to 240 V +/-10%, 50/60 Hz Required power capacity: 7A (100 to 120V)/4A (220 to 240V)	
Power consumption	Approx. 700W	
Acoustic noise level	During operation (no cutting): 65dB (A) or less, during standby: 40dB (A) or less (according to ISO 7779)	
Dimensions	Width x depth x height: 745 x 955 x 858mm	
Weight	102kg	109kg
Operating temperature	41 to 104F (5 to 40C)	
Operating humidity	35 to 80% (no condensation)	
Included Items	Handy panel, power cord, tool sensor, sensor cable, nut, nut wrench, wrench, hexagonal wrenches, Roland Software CD-ROM, SRP Player CD-ROM, User's Manual, Roland Software Software Guide, SRP Player Installation and Setup Guide, and NC Code Reference Manual	Handy panel, power cord, tool sensor, sensor cable, nut, nut wrench, wrench, hexagonal wrenches, Roland Software CD-ROM, SRP Player CD-ROM, User's Manual, Roland Software Software Guide, SRP Player Installation and Setup Guide, NC Code Reference Manual, and Automatic Tool Changer (Refer to the ZAT-540 specs below.)
Automatic Tool Changer (ZAT-540)		
Number of tools housed	4	
Maximum tool length	110mm	
Maximum tool diameter	10mm	
Maximum tool weight	350g	
Tool-holder format	Taper shank: JBS4002 15T	
Tool-selection method	Direct-changing type, fixed-address specification	
Compatible compressed air	102 to 145 psi, 1.8CFM (0.7 to 1.0 MPa, 50 L/min or higher)	
Spindle speed	400 to 12,000 rpm; 400 to 3,000 rpm for positioning and centering	
Weight	6.8kg (total weight including spindle, magazine, control box, etc.)	
Included items	Control box, magazine unit, ATC spindle, air cylinder, base plate, Z-origin sensor, spacer, cap screws, hexagonal wrenches, retaining bands, cable retainers, and user's manual	

Included Items:



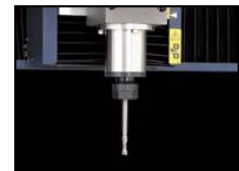
SRP Player Software



Virtual Control Panel



Handy Panel

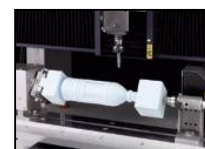


High Speed Spindle

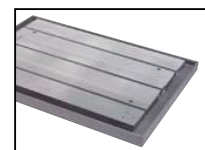
Optional Items:



Automatic Tool Changer (ZAT-540)



Rotary Axis (ZCL-540)



T-Slot Table (ZTT-540)



Safety Cover (ZBX-540E)

Roland reserves the right to make changes in specifications, materials or accessories without notice. Your actual output may vary. For optimum output quality, periodic maintenance to critical components may be required. Please contact your Roland dealer for details. No guarantee or warranty is implied other than expressly stated. Roland shall not be liable for any incidental or consequential damages, whether foreseeable or not, caused by defects in such products. All trademarks are the property of their respective owners.

Authorized Dealer:

Intellecta Technologies Pty Ltd
 51 George St Thebarton SA
 ph +61 8 8351 8288
 fx: +61 8 8351 8388
 EM: support@intellecta.net
 web: intellecta.net