

Roland® MODELA

Modelling/Milling and 3D Scanning in one Low Cost Machine

What is a MODELA?

The Roland MODELA has been developed by Roland as a tool primarily for producing 3D models in commercial design studios. In this context the low cost and small footprint allows it to literally sit on a designer's desktop. Other commercial uses are as diverse as use by architectural modellers and jewellery designers.

There are two models, identical apart from their machining envelope, the MDX-15E (150 x 100 x 60mm) and the MDX-20E (200 x 150 x 60mm).

OK, so MODELAs are essentially compact low cost 3D capable miller/router/engravers. But that is not all, they come complete with an interchangeable scanning head that quickly converts the MODELA to a full 3D contact scanner. Any object placed on the bed can be automatically scanned to produce a full 3D image of it.

MODELAs, then, are probably the most versatile all round machines available at any price. They mill, they rout, they engrave, they model in 3D, and they scan in 3D, not bad for such a low cost machine.

What can I do with a MODELA in school?

Well, the list is endless, but here are a few options:

Milling

Linked to 2D Design they are superb and accurate light milling machines. They will tackle many of the sort of jobs that a heavier machine such as a MDX-40E would normally do, in materials such as wood, MDF, plastic, etc., (obviously it will take a little longer machining them).

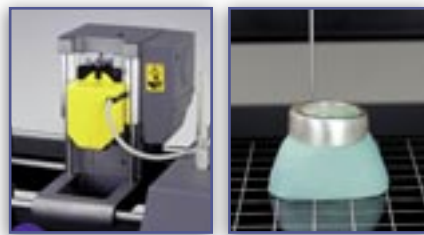


3D Manufacturing

Linked to 3D Design software such as SolidWorks or Pro/DESKTOP, they are the easiest and by far the cheapest way to real output. As well as making 3D models, they are great for producing moulds and plugs for vacuum forming and casting. They are also ideal for direct machining of jewellery items in a range of materials.

Scanning

Small objects (eg., a model "micro car") can be scanned, scaled up, machined in foam and then vacuum formed. Large objects (eg., a sculpture in clay) can be scanned then, for example, scaled down, machined as a mould in wax, and then a series of personalised buttons for garments could be cast from the mould in resin. Organic forms can be scanned and then imported into software such as Pro Engineer, and then modified or incorporated into a 3D CAD model.



PCB work

Linked to PCB Design and Make, a MODELA makes a great PCB manufacturing centre.

What about software ?

MODELA comes with a windows driver and a range of useful free utilities, but for serious work, extra software is needed. As a minimum we would strongly recommend **2D Design V2**. This drives the MODELA directly and will easily manage most users requirements for milling and engraving.

For simple 3D design, **3D Engrave** is a useful starting point. It is a 3D design package that is so simple to use, even younger students can create exciting designs. **VCarve** and **PhotoVCarve** are also dead easy to use and produce stunning results.

For more sophisticated full 3D designs we recommend **Pro Engineer** or **SolidWorks**. This represents the best balance of power versus ease of use available today, in a full blown solid modelling package.

Whichever solid modelling package you use you will need to load designs into a machining package to drive the machine. **Modela Player 4** is supplied with the Modela to do this. Whilst it is a great piece of software, it is possibly too sophisticated for day to day school use. Therefore we recommend **Visual Toolpath**. This has similar functionality, but is designed to be easy to use in schools.

Finally, don't forget **PCB Design & Make** Simply draw your PCB then engrave it directly onto the copper board.

Big Vs Small

We would all like big powerful machines, and they are certainly something to aspire to (we do our own range of big machines). However in the real world, big is not always beautiful. A big machine costs a lot, and a powerful machine can do a lot of damage (to workpieces, expensive tools and even itself), if something goes wrong. A big machine can also eat expensive materials at a frightening rate (kids will always design things as big as the machine allows, or bigger!). Even a big machine can only do one thing at a time, so while a student is doing a 3D model, no one else can use it for milling or PCB manufacture. Many schools have already opted for the "bums on seats" option and have bought several MODELAs rather than one larger machine.

Aren't MODELAs just toys?

Well, some of our competitors like to give that impression, but in reality they are built to the same high standards of all other Roland products. They are designed for commercial use and are rated to run 24 hours a day, 7 days a week. They may be small, and easy to move around, but they have generous machining envelopes. Sure, they are not going to take heavy cuts out of blocks of aluminium, but they can easily deal with most plastics, MDF, hardwood, etc., as well as modelling materials such as foams and waxes. Are they toys then, or are they CAD/CAM's best kept secret - you decide!

MODELA ACCESSORIES

Roland can supply the full range of standard accessories for the MODELA. We also stock our own tools.



FOREX Classic Box



ROLAND MODELA

MDX-15E

The MDX-15E is now well proven in school use. Its machining envelope is more than adequate for machining a wide range of items, from jewellery work through to larger items such as mobile phones, project cases, etc.

The MDX-15E is ideal as a budget starter machine, or to complement larger machines, (such as RotoCMM), by using it as, say, a specialist machine for 3D work. Many schools have bought several machines rather than one larger one, to increase student access.

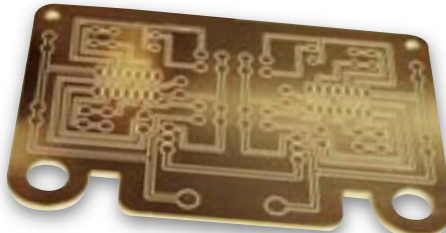
- | Axis travel 150 x 100 x 60mm
- | Max. object machinable 150 x 100 x 60mm
- | Scan envelope 150 x 100 x 60mm
- | Maximum feed rate 15mm/sec
- | Spindle speed up to 6500rpm
- | Highest scanning resolution 0.05mm
- | Probe length 60mm, tip diameter 0.08mm
- | Serial interface
- | Dimensions 426(W) x 280(D) x 305(H)mm
- | Weight 9.6Kg
- | 1 year warranty.
UK Mainland & Ireland: Return to Base
Elsewhere: Return and Collect
- | TechSoft Education Inset Pack - Inset Course Booklet, CD, Accessories and Materials

**FREE
EDUCATION
INSET PACK**

A free TechSoft Education Inset Pack is supplied with each machine. This includes an Inset Course booklet with "hands-on" tutorials, a tutorial CD, accessories and sample pieces of material.
See page 50



Camera Prototype
(High Density Foam)



Isolation Engraved PCB
(FR2 PCB Laminate Board)



Adjustable Mirror
(Slot jointed 3mm FOREX Classic
with mirrored acrylic)



ROLAND MODELA

MDX-20E

Essentially a "stretched" MDX-15E, the MDX-20E offers exactly twice the working envelope of the smaller machine at far less than twice the cost.

If the budget will stretch, it is well worth upgrading to an MDX-20E to take advantage of the possibilities offered by the larger scanning and milling areas.

FEATURES

- | Axis travel 200 x 150 x 60mm
- | Max. object machinable 200 x 150 x 60mm
- | Scan envelope 200 x 150 x 60mm
- | Maximum feed rate 15mm/sec
- | Spindle speed up to 6500rpm
- | Highest scanning resolution 0.05mm
- | Probe length 60mm, tip diameter 0.08mm
- | Serial interface
- | Dimensions 477(W) x 382(D) x 305(H)mm
- | Weight 13.7Kg
- | 1 year warranty.
UK Mainland & Ireland: Return to Base
Elsewhere: Return and Collect
- | TechSoft Education Inset Pack - Inset Course Booklet, CD, Accessories and Materials



Engraving Laminate Key Fob
(Flexible Brushed Aluminium on Black)

Roland® EGX-350E

Mid Range Milling/Engraving Machine with 3D Capability

What is an EGX-350E?

The Roland EGX-350E has been developed by Roland as a tool primarily for engraving. However, when fitted with a milling cutter it becomes a superb light milling/routing machine, with full three axis capability. Continuing in the Roland tradition of superbly designed and built machines it delivers a great set of specifications at a surprisingly low cost.

So if you are looking for a lower priced machine with good 2D and 3D capabilities, the EGX-350E certainly fits the bill. It is especially worth noting that the EGX-350E has twice the bed size and four times the XY feedrate of an MDX-20E, for not much more cost, making it an ideal first machine or a great addition to bolster machining capacity within your department.

However, users who are looking for a machine with a larger bed, greater 3D machining capacity and more optional extras should see if the MDX-40E falls inside their budget.

What are the specs like?

On the EGX-350E the maximum machinable object is large (305 x 203 x 37mm) for its class.

The 50W spindle motor and rigid construction, means this machine is quite capable of serious work with most workshop materials. It is even capable of engraving and light machining, in a range of light metals. The EGX-350E also benefits from high feed rates, with XY speeds of 60mm/sec, and Z axis speed of 30mm/sec. These high speeds allow fast throughput of both 2D and 3D work.

With low noise levels the EGX-350E can be used in either a workshop or lab-type environment. Of course, the machine is totally enclosed with safety interlocks, and fully complies with CE regulations.

What about ease of use?

The machine has been designed to be as simple to use as possible, nobody wants a machine that is fiddly to set up when 25 students are all hassling them at the same time! Top loading tools with depth stop collets are used for most jobs, ensuring quick, effortless setting up and tool changing (no tedious "touching on" of tools is required!).

The EGX-350E has a separate Handy panel (see main picture) which can be used to set up and control the machine. However, when using the machine from 2D Design V2 all setup of speeds, feeds, etc. is done from within the software.

What about software?

The EGX-350E comes with a windows driver and a range of useful free utilities, but for serious work, extra software is needed. As a minimum



we would strongly recommend **2D Design V2** (see page 4). This drives the EGX-350E directly and will easily manage most users requirements for milling and engraving.

For simple 3D design, **3D Engrave** (supplied free) is a useful starting point. It is a 3D design package that is so simple to use, even younger students can create exciting designs. **VCarve** and **PhotoVCarve** are also dead easy to use and produce stunning results.

For more sophisticated full 3D designs we recommend **Pro Engineer** or **SolidWorks**. This represents the best balance of power versus ease of use available today, in a full blown solid modelling package.

Whichever solid modelling package you use you will need to load designs into a machining package to drive the machine. As the EGX-350E is sold commercially as an engraver there is no 3D CAM software supplied with the machine, and so you will need to purchase **Visual Toolpath**. Visual Toolpath has very sophisticated functionality, but is designed to be easy to use in schools.



Finally, don't forget **PCB Design & Make**. Simply draw your PCB then engrave it directly onto the copper board.



How about work holding?

Work is normally held with double-sided tape on the standard flat bed. Over many years this has proved by far the simplest system for general school use. Of course clamps can be used if required, but generally using clamps makes setup fiddly and inevitably means that sooner or later a tool will hit a clamp and break!

(N.B. Anyone who has had a bad time with double sided tape has more than likely used the wrong tape.



Push-Along
Toy Frog

Are there any specialist features?

The EGX-350E was developed as an engraver and so it has Active Surface Tracking technology which the user can choose to take advantage of.

The Active Surface Tracking system constantly monitors the surface of the material, and moves the cutterhead up and down to ensure an even depth of cut, even over bowed material. The benefits of this system are that non-flat materials can be engraved with ease. This makes it much simpler to engrave on jewellery items such as badges, hand-made items, control panels, toys, etc. A further benefit is that it automatically avoids the scratches that can sometimes occur on non-flat materials, as the tool moves from one part of the design to another (if care has not been taken when setting up!).

What are the optional extras?

**OPTIONAL
SELF-CENTERING
VICE**

Self-Centering Vice

3D machining one side of an object is easy, but if the object needs to be machined all round how do you hold it? TechSoft have designed a low cost solution to this problem, a special self-centering vice (see below). 3D objects are machined into a block, which can then be accurately turned over for machining the other surface (two sided machining). Complex objects can be machined from four sides.

To fit the vice the user simply removes the standard bed and attaches the vice to the metal machine bed.



Max. billet size: 345 x 197mm

The use of the self-centering vice is fully supported within **Visual Toolpath** for both 2 and 4 sided machining.

Marker Pen Prototype (19mm FOREX Classic)



Designed in SolidWorks / Machined using a self-centering vice / Spray paint finish with a Print & Cut decal

Why should I buy an EGX-350E?

All schools need a CNC milling capability, it is simply a standard requirement for a modern D&T department. Even laser users need a milling capability for the shapes and processes a laser cannot handle, particularly 3D machining.

This low cost machine is simple to set up and use, exceptionally versatile, has a generous machining capacity and great cutting performance. It comes from a proven and trusted manufacturer. Last but not least, it has the backing of Roland's unrivalled technical support. For anyone looking to buy a miller/engraver which can also offer some 3D machining, the EGX-350E must be a serious contender.

FEATURES

- └ Axis travel 305 x 203 x 40mm
- └ Max. object machinable 305 x 203 x 37mm
- └ Max. feed rate (X & Y axes) 60mm/sec, (Z axis) 30mm/sec
- └ Spindle speed range 5000 - 20000rpm
- └ Resolution 0.01mm
- └ Full guarding with safety interlocks
- └ USB interface
- └ Dimensions 616(W) x 591(D) x 393(H)mm
- └ Weight 34Kg
- └ 1 year warranty.
- └ TechSoft Education Inset Pack - Inset Course Booklet, CD, Accessories and Materials



**FREE
EDUCATION
INSET PACK**

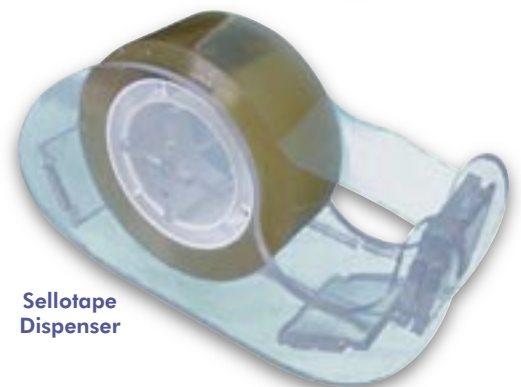
A free TechSoft Education Inset Pack is supplied with each machine. This includes an Inset Course booklet with "hands-on" tutorials, a tutorial CD, accessories and sample pieces of material.



Model
Chair



Noughts & Crosses
travel game



Sellotape
Dispenser

EGX-350E ACCESSORIES

Roland can supply the full range of standard accessories for the RotoCMM. We also stock our own tools.

Roland®

MDX-40E

Versatile 3D Capable Miller/Router The Ideal Machine for School Use

What is a MDX-40E?

The MDX-40E has been specifically designed as a low cost solution to meet all the milling/routing/3D modelling/engraving needs of most schools. It was developed by Roland in close collaboration with Education Specialists.

The MDX-40E is the spiritual successor to the Roland CAMM 2, the most popular milling system ever put into UK schools. The MDX-40E builds on the strengths of the older machines, and adds many new features and capabilities.

What are the specs like?

On the MDX-40E the maximum machinable object is exceptionally large (305 x 305 x 75mm) for its class. The very deep Z axis capability means that it is just at home producing large 3D models, as it is milling and engraving.

With a powerful 100W spindle motor and a rigid, heavy duty construction, this machine is quite capable of serious work with most workshop materials. It is even capable of engraving, and light machining, in a range of light metals. The MDX-40E also benefits from high feed rates, with XY speeds of 50mm/sec, and Z axis speed of 30mm/sec. Fast speeds are very significant, particularly when 3D machining.

With low noise levels the MDX-40E can be used in either a workshop or lab-type environment. Of course, the machine is totally enclosed with safety interlocks, and fully complies with CE regulations.

What about ease of use?

The machine has been designed to be as simple to use as possible, nobody wants a machine that is fiddly to set up when 25 students are all hassling them at the same time! Top loading tools with depth stop collets are used for most jobs, ensuring quick, effortless setting up and tool changing (no tedious "touching on" of tools is required!).

The MDX-40E has a very simple control panel (just four buttons), and when using the machine from 2D Design all setup of speeds, feeds, etc. is done from within the software. However, if for any reason you want full manual control over the machine, there is an intuitive on-screen virtual panel, which allows control from your computer.

The MDX-40E is also supplied with a Z0 Sensor (see right), which when placed on the workpiece, can be used to automatically set the Z0 position. This is an incredibly simple way of setting tool depths and is unique to Roland in this class of machine.



What about software?

MDX-40E comes with a windows driver and a range of useful free utilities, but for serious work, extra software is needed. As a minimum we would strongly recommend **2D Design V2**. This drives the MDX-40E directly and will easily manage most users requirements for milling and engraving.

For simple 3D design, **3D Engrave** (supplied free) is a useful starting point. It is a 3D design package that is so simple to use, even younger students can create exciting designs. **VCarve** and **PhotoVCarve** are also dead easy to use and produce stunning results.

For more sophisticated full 3D designs we recommend **SolidWorks**. This represents the best balance of power versus ease of use available today, in a full blown solid modelling package.

Whichever solid modelling package you use you will need to load designs into a machining package to drive the machine. **Modela Player 4** is supplied with the MDX-40E to do this. Whilst it is a great piece of software, it is possibly too sophisticated for day to day school use. Therefore we recommend **Visual Toolpath**. This has similar functionality, but is designed to be easy to use in schools.

Finally, don't forget **PCB Design & Make**. Simply draw your PCB then engrave it directly onto the copper board.



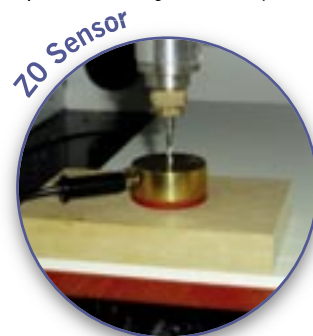
C02 Car

Model Chair
(9mm Plywood)

How about work holding?

Work is normally held with double-sided tape on the standard flat bed. Over many years this has proved by far the simplest system for general school use. Of course clamps can be used if required, but generally using clamps makes setup fiddly and inevitably means that sooner or later a tool will hit a clamp and break!

(N.B. Anyone who has had a bad time with double sided tape has more than likely used the wrong tape. TechSoft's tape sticks tight, but is easy to peel off leaving no residue.)



What are the optional extras?

OPTIONAL SELF-CENTERING VICE

Self-Centering Vice

3D machining one side of an object is easy, but if the object needs to be machined all round how do you hold it? TechSoft have designed a low cost solution to this problem, a special self-centering vice (see below). 3D objects are machined into a block, which can then be accurately turned over for machining the other surface (two sided machining). Complex objects can be machined from four sides.

The vice fits easily onto the existing bed and can be quickly removed when not required.



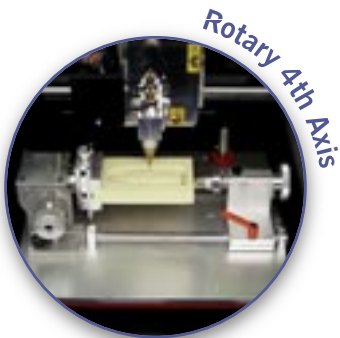
Max. billet size: 345 x 197mm

The use of the self-centering vice is fully supported within **Visual Toolpath** for both 2 and 4 sided machining.

OPTIONAL ROTARY 4TH AXIS

Rotary 4th Axis

The self-centering vice is great, but an even more sophisticated option is available for machining complex 3D objects, the rotary 4th axis. This device is like a mini lathe fitted under the cutter and capable of rotating an object through a full 360°. It allows fully automatic machining of full 3D objects (max. size 135 x 75 x 40mm). Software support is via Modela Player 4 supplied free with the machine.



OPTIONAL SCANNING HEAD

Scanning Head

To enhance the versatility of this superb machine even further, an optional PICZA type scanning head is available. This quickly interchanges with the cutter head and means that just one machine can fulfil all the requirements of most schools for 3D work.



Scanned images may be used for presentation in conjunction with a desktop publishing package, Web page design, etc. 3D images may be added to existing 3D designs, or can form the basis of computer animations. Of course scanning can also be used for just plain copying of an existing object. Simply scan it, scale up or down, even invert if required, then machine a new one!



Children's Toy Plane
"Designs to Inspire and Make"

Why should I buy a Roland MDX-40E?

All schools need a CNC milling capability, it is simply a standard requirement for a modern D&T department. Even laser users need a milling capability for the shapes and processes a laser cannot handle, particularly 3D machining.

This low cost machine is simple to set up and use, exceptionally versatile, has a generous machining capacity and great cutting performance. It comes from a proven and trusted manufacturer. The optional extra accessories make it the most versatile machine in its class, it can even double up as a high quality 3D scanner. Last but not least, it has the backing of Roland's unrivalled technical support.

Why buy a MDX-40E? Actually its harder to think of a reason not to!

FREE EDUCATION INSET PACK

FEATURES

- └ Axis travel 305 x 305 x 105mm
- └ Max. object machinable 305 x 305 x 75mm
- └ Max. feed rate (X & Y axes) 50mm/sec, (Z axis) 30mm/sec
- └ Spindle speed range 4500 - 15000rpm
- └ Resolution 0.01mm
- └ Full guarding with safety interlocks
- └ USB interface
- └ Optional scanning head
- └ Optional Rotary 4th Axis
- └ Dimensions 669(W) x 760(D) x 554(H)mm
- └ Weight 66Kg
- └ 1 year warranty.
- └ TechSoft Education Inset Pack - Inset Course Booklet, CD, Accessories and Materials



Hand Controller Prototype
(19mm FOREX Classic with a spray paint finish)

MDX-40E ACCESSORIES

Roland can supply the full range of standard accessories for the MDX-40E. We also stock our own tools.

Roland®

MODELA PRO II MDX-540E

Large, Powerful, Ultra High Speed 3D Capable Miller/Router

What is an MDX-540E?

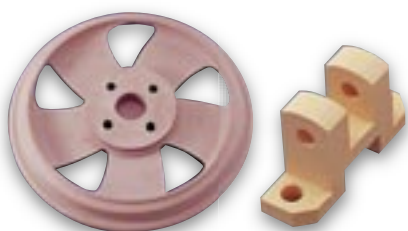
Over recent years, rapid prototyping has become increasingly important to industry. Exciting new technologies seem to be emerging all the time. However, it has also become clear that for rapid prototyping of many objects, the best process available is good old fashioned milling. Reasons for this could be specific material requirements, cost, or versatility where one machine could be used for several purposes. Of course to justify the "rapid" in rapid prototyping, machines have had to change and so the technology of Subtractive Rapid Prototyping (SRP) has emerged.



The MODELA Pro II MDX-540E is Roland's groundbreaking new machine to fulfil this role. Brimming with technological advances the MDX-540E is ultrafast and exceptionally smooth in operation.

Commercially, the MDX-540E offers engineers and designers the opportunity to turn concepts quickly and efficiently into three dimensional prototypes in a wide range of materials, eliminating costly outsourcing. Additionally, it offers a fast, high precision but low cost CNC production capability for use with plastics and light alloys, where the high cost of a "heavy" conventional CNC machine cannot be justified.

Of course these relatively low cost commercial machines designed for ultra high speed prototyping, yet with a production capability, are ideal for many schools. In fact the increased use of 3D CAD such as SolidWorks, or Pro Engineer, means that there has never been a better time to purchase a machine with the SRP capabilities of the MDX-540E.



Subtractive Rapid Prototyping
Models



How is it constructed?

The MDX-540E is a really heavy duty machine with the precision to perform the most delicate of operations. This high tech machine is equipped with AC servo motors on all three axes. The motors provide an amazing feedrate of up to a genuine 125mm/sec (7500mm/min). The servo motor drive system provides high torque at all feedrates and cannot "miss steps" even under heavy load (if accidentally overloaded the machine will simply stop and report an error before any damage can occur!). The smooth nature of the drive also ensures exceptionally smooth machining. This will be a revelation to those used to the more jerky movements of stepper based systems.

The powerful 400W spindle motor is purpose built as an integral part of the machine, not just a bolted on hand router. It is whisper quiet in operation (in fact when not cutting, it is hard to tell if the motor is even running!), yet, being extremely efficient, it provides considerable cutting power. The machine is constructed of substantial castings to provide excellent rigidity. All moving parts run on precision linear bearings.

N.B. Please note there is an optional stand available for the MDX-540E if required.

What is it like to use?

The MDX-540E is simply a delight to use. It has its own intuitive on-screen Virtual Panel (see below), which allows the user full control over the machine. There is also an ergonomically designed hand controller (see below) which provides the easy offline control so useful for setting up, etc.



Aluminium Part

What about software?

MDX-540E comes with a windows driver and a range of useful free utilities, but for serious work, extra software is needed. As a minimum we would strongly recommend **2D Design V2**. This drives the MDX-540E directly and will easily manage most users requirements for milling and engraving.

For simple 3D design, **3D Engrave** (supplied free) is a useful starting point. It is a 3D design package that is so simple to use, even younger students can create exciting designs. **VCarve** and **PhotoVCarve** are also dead easy to use and produce stunning results.

For more sophisticated full 3D designs we recommend Pro Engineer or **SolidWorks**. This represents the best balance of power versus ease of use available today, in a full blown solid modelling package.



Whichever solid modelling package you use you will need to load designs into a machining package to drive the machine. **Visual Toolpath** is ideal for this and is supplied free with the machine.

Finally, don't forget **PCB Design & Make**. Simply draw your PCB then engrave it directly onto the copper board.

How about work holding?

The MDX-540E is supplied with an aluminium bed as standard. With such a versatile and powerful machine there is no 'one way' to hold work to the bed. Depending on the material being machined, you can simply use double sided tape, or optional extras such as Tee-slot bars, low profile clamps or lightweight machine vices.

Are there any optional extras?

OPTIONAL T-SLOT ATTACHMENT

Tee-Slot Bars **NEW**

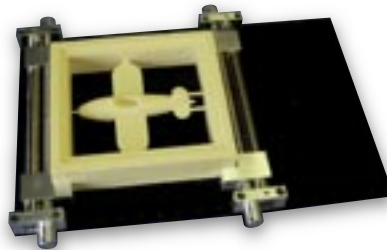
Tee-slot bars are available from Roland (in sets of two). The bars can be used in the same way as a normal tee-slotted machine bed, to either fix the workpiece or a vice directly to the bed, or in conjunction with a clamping kit.

OPTIONAL SELF-CENTERING VICE

Self-Centering Vice

3D machining one side of an object is easy, but if the object needs to be machined all round how do you hold it? TechSoft have designed a low cost solution to this problem, a special self-centering vice. 3D objects are machined into a block, which can then be accurately turned over for machining the other surface (two sided machining). Complex objects can be machined from four sides.

The vice fits easily onto the existing bed and can be quickly removed when not required.



Max. billet size: 345 x 197mm

The use of the self-centering vice is fully supported within **Visual Toolpath** for both 2 and 4 sided machining.

OPTIONAL ROTARY 4TH AXIS

Rotary 4th Axis

The self-centering vice is great, but an even more sophisticated option is available for machining complex 3D objects, the rotary 4th axis. This device is like a mini lathe fitted under the cutter and capable of rotating an object through a full 360°. It allows fully automatic machining of full 3D objects. Software support is via **SRP Player** supplied free with the machine.



N.B. Metal workpieces are not supported when using the Rotary Axis.

FREE EDUCATION INSET PACK

Why should I buy an MDX-540E?

The MDX-540E is a large powerful ultra high speed machine with outstanding versatility at an exceptionally good price. It is the ideal machine for any department wishing to develop its 3D rapid prototyping capability, and also to have a large milling and routing capability. As with all Roland products, this is a machine of true quality. If you are looking for a machine in this class, checkout the "competition" first!

FEATURES

- └ Axis travel 500 x 400 x 155mm
- └ Max. object machinable 500 x 400 x 125mm
- └ Max. feed rate 125mm/sec (5100mm/min)
- └ Max. Acceleration to 0.2G
- └ AC servo motor drives
- └ 400W spindle motor
- └ Spindle speed range 400 - 12000rpm
- └ Resolution 0.001mm
- └ Full guarding with safety interlocks
- └ USB interface
- └ Dimensions 1060(W) x 1100(D) x 978(H)mm (with case)
- └ Weight (with case) 170Kg
- └ 1 year warranty.
- └ TechSoft Education Inset Pack - Inset Course Booklet, CD, Accessories and Materials

Optional Rotary 4th Axis

- └ Max. billet size 180mm diameter x 371mm.
- └ Max. cutting area 180mm diameter x 285mm.
- └ Max. revolution speed 20rpm.
- └ Weight 6.5Kg.

MODELA PRO II ACCESSORIES

Roland can supply the full range of standard accessories for the MDX-540E. We also stock our own tools.